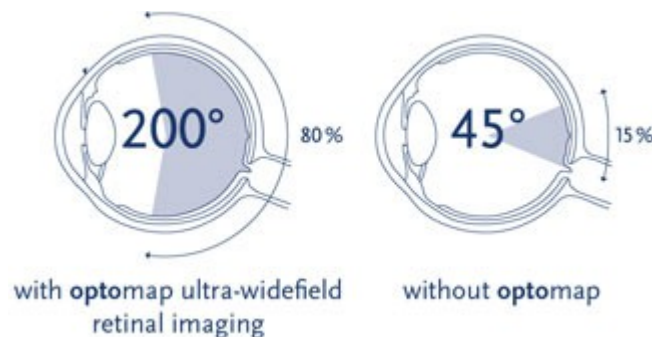




New Technology Screening Test

- **optomap** is a simple, non-invasive procedure.
- In less than a half a second, we can generate a high-resolution, digital, color image that allows us to see 80% of your retina without dilation. (Infrequently, dilation may be medically necessary following an optomap exam.)



- **Regular monitoring of the retina can detect serious eye and systemic conditions, including but not limited to, retinal tears, detachments, glaucoma, macular degeneration, diabetes, high blood pressure, cancer, and tumors.**
- optomap allows us to track changes in your eye over time by comparing each year's images.
- optos, the maker of optomap, was founded by Douglas Anderson who's 5 year old son went blind in one eye, after a retinal detachment was detected too late.
- We recommend optomap to patients of all ages as an essential addition to your annual eye examination.

There is a charge of \$39 for the optomap screening, which is not covered by insurance.

_____ Yes, I elect to have the optomap screening today.

_____ I would like to talk to the doctor to learn more about optomap, before proceeding with the test.

_____ No, I do not want the optomap screening today.

Patient's Signature _____ Print Name _____ Date: _____